

# VERSALIFT

## VTL130-FZ

Pickup mounted  
telescopic platform



Available for class B  
driving licence



LMC controls with  
variable outreach



Emergency lowering  
controls at the pedestal



Turret tailswing within  
the mirrors



1 kV certified low  
voltage insulation



# VERSALIFT

A **TIME** MANUFACTURING COMPANY

# VTL130-FZ - Ford Ranger



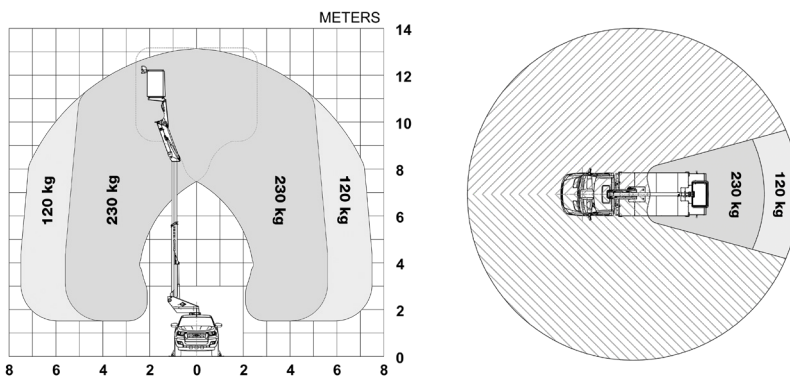
Manufactured from 1.5mm thick ultra-high strength steel

Added stability delivering smooth and steady working conditions

■ Length: 6,625 mm ■ Height: 2,555 mm ■ Wheelbase: 3,220 mm



## Diagramme(s)

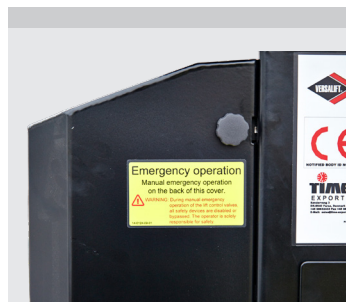


## Options

- Outrigger pads with holders
- Hydraulic axle locking system
- Flashing lights on the roof
- Aluminium cabinets for the chassis
- Safety stripes (red/white)
- Reversing camera
- Display in the upper control panel
- Stow guide & limited working area without outriggers



The shaped profile ultra high strength steel booms provide improved rigidity, stiffness and performance



Ground level emergency lowering from the chassis (pedestal mounted valve bank)



Aluminium cabinets for the chassis (optional)



LMC (Load Moment Controls): Variable outreach and up to 2 actions at a time (1 per joystick)

## Notes

Technical information is subject to change without prior notice. Images may show optional equipment. Installations and/or options may not be available in your specific region.

\* Depending on the vehicle.

\*\* Max payload with a driver, a passenger and a full tank of fuel (220 kg added to the installation weight).

## Distributor

**Versalift International**  
Soendervang 3, 9640 Farsøe  
Denmark

+45 9863 2433  
sales@versalift.dk  
versaliftinternational.com