

STEIGER® TB 300

The NEW class: 30 m on 3.5 t Worldwide novelty



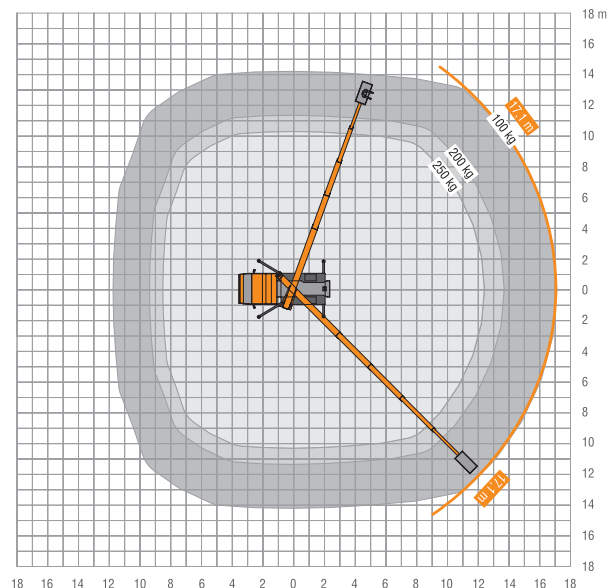
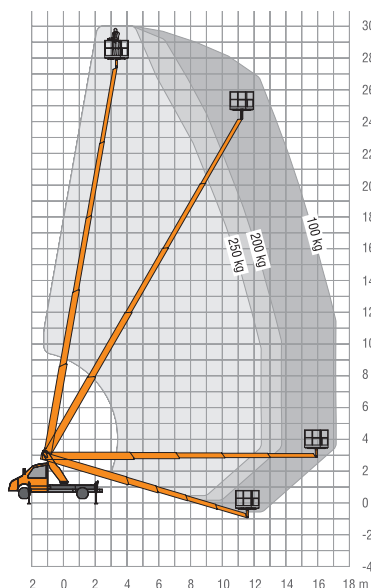
To be driven
from the
class B
driving
licence!

- 30 m max. working height
- 30 m max. working height
- Lateral outreach max. 14.2 m
- 250 kg basket load

- + 3 movements simultaneously possible (lift, rotate, telescope) + basket rotation
- + Improved work speeds
- + Premium technology in highest stability with easy handling
- + High-strength fine-grained steel for maximum stability
- + Improved basket unit with new design
- + Common parts to other STEIGER® models for even more operating and maintenance efficiency

- + Reduced stock of spare-parts through modular design
- + New more torsion-resistant substructure construction
- + Boom system with laser-welded seam (less distortion, more precise and more stable)

First machine of
30 meters in the
3.5 t range. Also
at maximum basket
load!









STEIGER® TB 300

The STEIGER® TB 300 is an **entirely new development**. Featuring a **sensational 30-m working height** and 17.1-m reach, the TB 300 on a 3.5-t chassis provides unprecedented performance capabilities. This innovation has an operating capacity that previously had only been available on 7.5-t truck-mounted work platforms. Class B driver's license holders benefit tremendously. The TB 300 will not only complement the previous 30-m, 7.5-t category but possibly replace older, heavier truck-mounted platforms on the market today. With 1.5 meters of additional working height available on 3.5-t

vehicles, equipment rental companies can look forward to **increased revenues, profits, and a higher ROI (return on investment)**. This 30-m work platform also scores with its short vehicle length and low height, which greatly enhances agility.

The STEIGER® TB 300 is the undisputed flagship of the **Hi-light Performance** series. Hi-light stands for **RUTHMANN's** ingenious design and steelfabrication techniques.

-  Convinces by performance and stability
-  Short overall vehicle length for higher manoeuvrability
-  Complements 30 m class on 7.5 t
-  **Mounted on the new Mercedes Benz Sprinter.**
Easy handling.












Protrudes from
your fleet!



VERSATILITY FOR EVERYONE

The new STEIGER® generation is attractive for diverse groups. It is a real novelty on the market promising you as customer maximum utilization rate and comfort for each field of application. All models can be driven with a class B driving license.



	30 m		5°		3,0 m
	17,1 m		1,40 x 0,70 m		8,07 m
	2 x 225°		250 kg	 xxx,xxx t	3.500 kg

RUTHMANN GmbH & Co. KG
Ruthmannstraße 4
48712 Gescher
GERMANY

Phone: +49 2863 204-0
Fax: +49 2863 204-212

Internet: www.ruthmann.de
E-Mail: info@ruthmann.de