

Specifications

Model	GTH™-4018	
Measurements	Metric	Imperial
Lifting height maximum with outriggers	17.61 m	57 ft 9 in
Lifting height maximum without outriggers	17.38 m	57 ft 0 in
Lifting capacity maximum	4,000 kg	8,818 lbs
Lift capacity at maximum height	2,000 kg	4,409 lbs
Lift capacity at maximum reach	650 kg	1,433 lbs
Forward reach maximum	13.36 m	43 ft 10 in
Reach at maximum height	0.89 m	2 ft 11 in
▲ Height	2.44 m	8 ft
▲ Height at steering wheel	1.60 m	5 ft 3 in
▲ Width	2.42 m	7 ft 11 in
▲ Cab width	0.93 m	3 ft
▲ Track	1.92 m	6 ft 4 in
▲ Wheelbase	2.95 m	9 ft 8 in
▲ Length at front wheels	4.83 m	15 ft 10 in
▲ Length at fork-holder plate	6.57 m	21 ft 6 in
▲ Ground clearance	0.35 m	1 ft 2 in
▲ Overall width, outriggers extended	2.87 m	9 ft 5 in
▲ Overall length	7.77 m	25 ft 6 in
▲ Obstruction angle		40°
▲ Departure angle		46°

Productivity

Inside/outside turning radius	1.87 m/3.55 m	6 ft 2 in/11 ft 8 in
Break-out force*	6,000 kg	13,228 lbs
Towing capacity at dynamometer**	6,533 kg	14,402 lbs
Drive speed max.	27 km/h	11 mph
Fork-holder plate rotation		138°
Chassis levelling on front axle		+/- 6°
Tyres (DIN 70361)	405/70 24" PR14 8 holes wheel disc	
Lifting/lowering speed**		15 sec./10 sec.
Extension/retraction speed**		23 sec./16 sec.

Power

Engine	Perkins 854E-E34TA turbo diesel 75 kW (100 hp), stage IIIB Perkins 1104D-E44T turbo diesel 75 kW (100 hp), stage IIIA	
Transmission	Hydrostatic variable displacement pump linked to variable displacement motor. Both piston type.	
Service pumps	Boom & Control system gear pump type: 280 Bar, 99L/min. Service Brake gear pump type: 200 Bar, 46 L/min.	
Petrol tank capacities	170 L	45 gal
Engine oil capacities	8 L	2.1 gal
Hydraulic oil tank capacities	112 L	29.6 gal
Weight***	11,980 kg	26,411 lbs

Standards Compliance

EU Machinery Directive 2006/42/EC

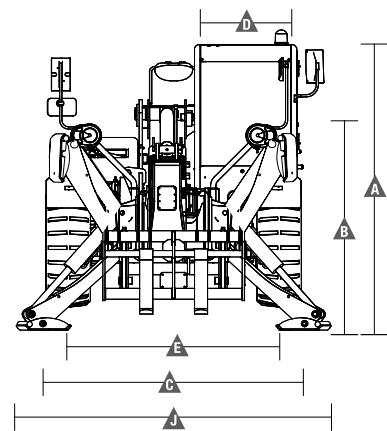
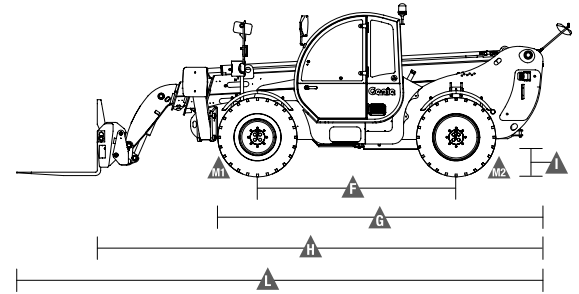
Operating cab conforms to ISO3471 (ROPS) and ISO3449 (FOPS)

Low emission engine conforms to EU Directive 97/68/EC Stage III and 2004/26/EC

Noise emission conforms to EU Directive 2000/14/EC (LpA=83 dB, LwA=103dB)

Vibration levels according to EN13059:2002 (hand-arm <2.5m/s², whole body 0.23m/s²)

Measurements



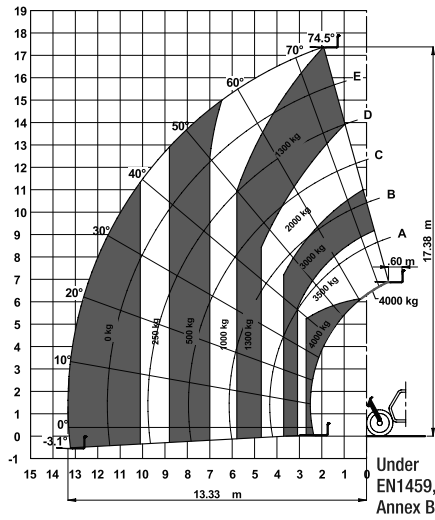
* With 800 L shovel SAE J 732/80

** Without load

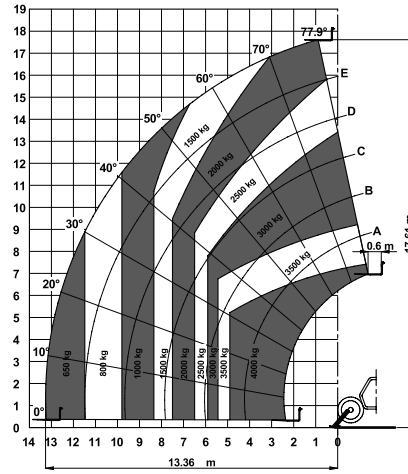
*** Weight will vary depending on options and/or country standards

Load Charts

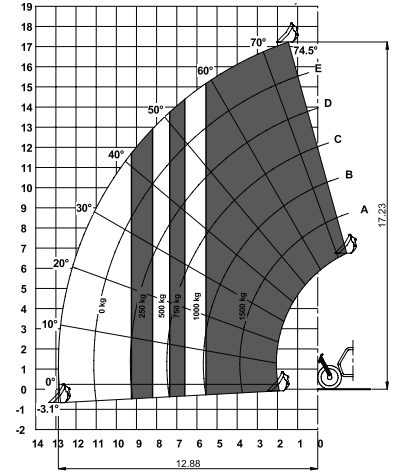
On wheels with forks



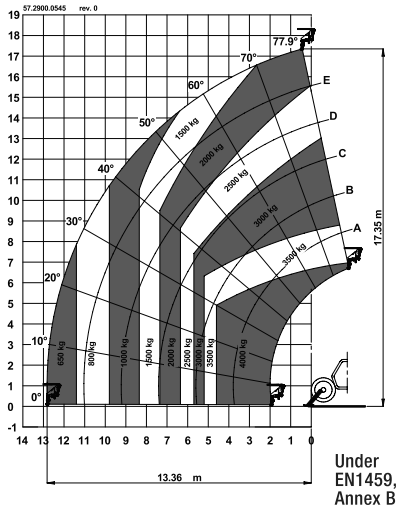
On outriggers with forks



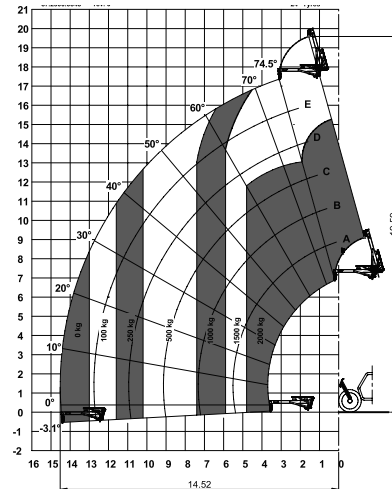
On wheels with 800 L shovel



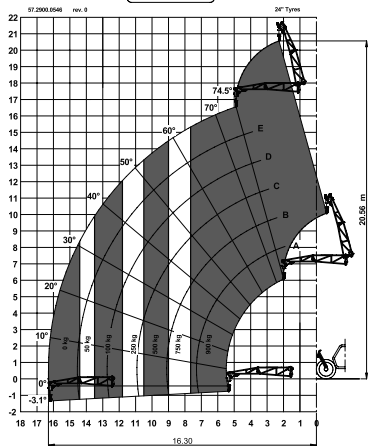
On outriggers with 5t fixed hook on plate



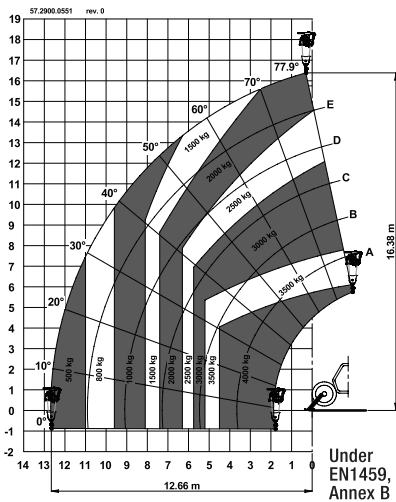
On outriggers with 2m jib (mechanical)



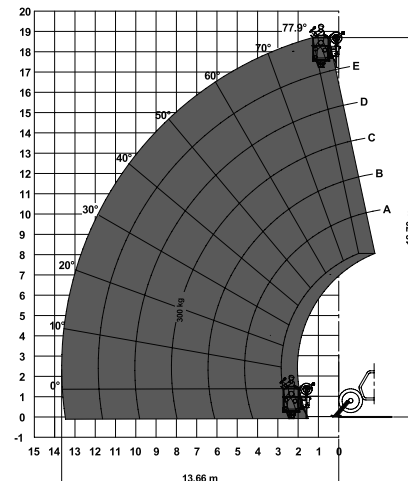
On outriggers with 4m jib (mechanical/hydraulic)



On outriggers with 4t hydraulic winch



On outriggers with 2P-300F manplatform



On outriggers with 3P-700REM 4400 manplatform

